



# IDYLLIC HOLIDAY RETREAT

[www.tuemuz.com.au](http://www.tuemuz.com.au)



This picturesque seaside holiday retreat has *absolute beach frontage*, panoramic views of the sea as well as a beautiful rural outlook. It is architecturally designed and built of cedar and local limestone.

This self-contained 2 bedroom cottage was *beautifully renovated* in 2008. It has 2 queen size beds, a “Jag” kitchen with Mielé appliances, a slow combustion heater in the living room and a 'Weber Q' BBQ.

tuEMUZ is ideal for couples who want to *relax and unwind from the everyday*, with a contemplation terrace where you can sit with a glass of wine, bask in the sun and enjoy nature at your doorstep or stroll leisurely to 'your own beach' just metres away!

Minimum stay 2 nights. Ideally prefer couples as only set up with 2 queen size beds.

\$300 per night for 3 – 4 people, \$275 for 2 people at peak times = school holidays, Easter, Long weekends.

Off peak – all other times = \$275 per night for 3 – 4 people, \$250 for 2 people.

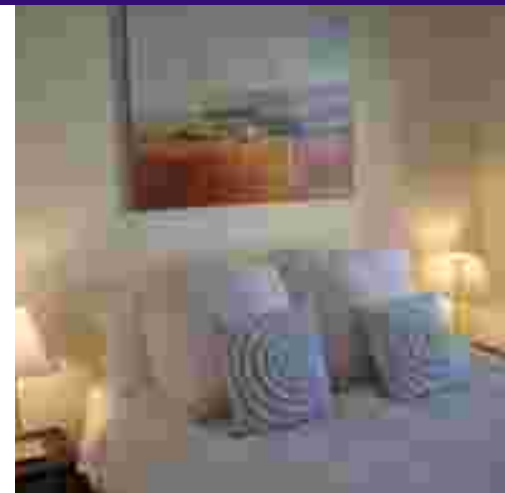
A cleaner is provided at the end of your stay and included in the rental price, however it is asked that guests leave the cottage as found. If for any reason additional cleaning is required, a fee will apply.

Linen an extra \$20 per couple. (sheets and towels.)

Bond of \$100.00 (for damage breakages etc.), plus 50% deposit at time of booking, remainder of payment 7 days prior to stay. Bond returned following stay.

Cancellation Policy – full refund if cancelled with one months notice, 50% with 2 weeks notice.

For booking enquiries please contact Rob Younger on 0418 820 396 or visit [www.tuemuz.com.au](http://www.tuemuz.com.au)





# IDYLLIC HOLIDAY RETREAT

[www.tuemuz.com.au](http://www.tuemuz.com.au)

